

The Little Tipper Truck

Armada Model Designs Ltd

SM01E

Why are character-vehicles so fascinating for so many pre-school children? I'm not sure we're qualified to answer that question, however, we do have our own card model contribution to such anthropomorphic antics.

There are a couple of relatively simple models here. Firstly, an Armada original creation; The Little Tipper Truck and secondly, an animal die. The animal die is a simple cube that fits conveniently in the Tipper Truck's rear container. Each face of the die has an image of a mammal regularly found at the zoo.

The tipper truck model really needs to be constructed by an adult or older child but the animal die is suitable for assembly by a younger child (with adult assistance in cutting and scoring).

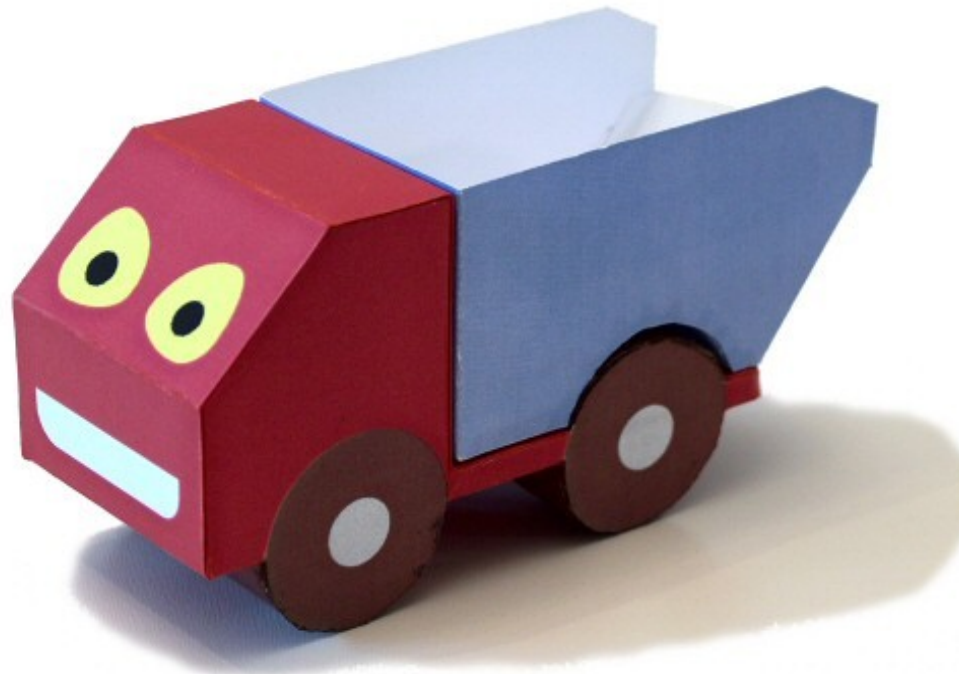
The simple premise for the tipper truck song (feel free to make up your own tune), is that the tipper truck is too busy to go and see the animals at the zoo. The song lists half a dozen creatures that the tipper truck might have seen.

Hey bambinos! Why not sing the tipper truck song yourself. As you sing, take the dice and throw it to find out what animal the tipper truck is thinking of next.

Whatever you choose to do, we hope you have fun with this cheeky little truck.

"The little Tipper Truck had work to do, he couldn't go and visit the zoo.

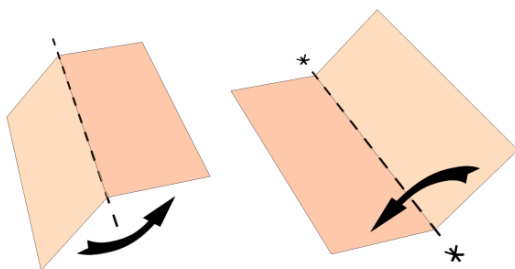
The Little Tipper Truck had to work all day, he couldn't watch the (*insert animal name here*) play"



Instructions

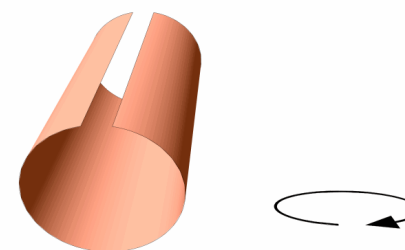
The tools required for card modelling (referred to as paper modeling in the USA) are generally to be found around the home. The Tipper Truck model and the die each require a single sheet of 150 gsm white card, scissors or a knife to cut out the components, a ruler for scoring straight lines and some glue (PVA white-glue, used sparingly is best but Uhu, Bostick or even Pritt Stick will do). Careful scoring of fold-lines is the key to accuracy of shape. Score-lines can be made using a pin or perhaps a blunt craft knife.

There are two Tipper Truck models contained within this document. One is pre-coloured, while the other is a white model, suitable for decorating with paints / felt tip pens etc.

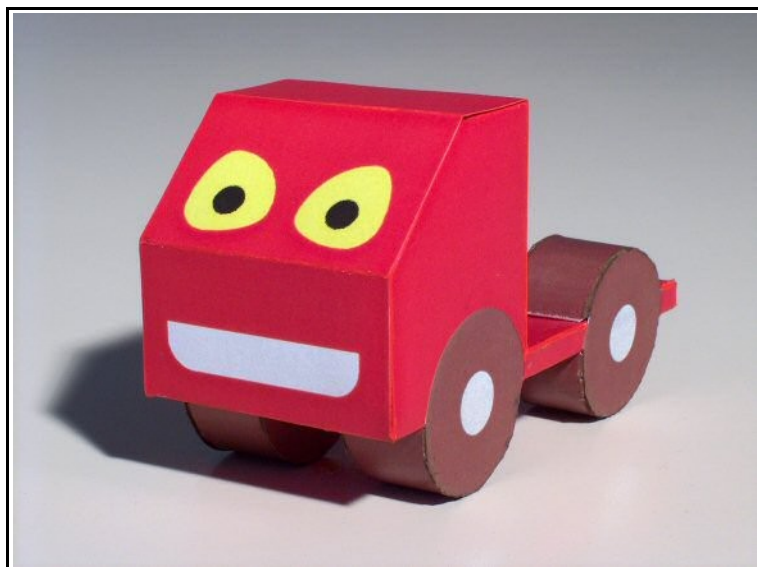


There are a couple of conventions used on the model sheets that need explaining. Firstly, dashed lines show where components (and gluing tabs) are to be scored and folded. Note, some folds will be “valley folds” - denoted by a cross at each end of the dashed line, while others are “crest folds” (see illustration on the left).

Some components, like the arch in the lower surface of the rear container, need to be rolled to create the correct shape. Where a component requires rolling, this is indicated by a broken ellipse with an arrowhead (see illustration on the right).



First score all dashed lines and then cut out the components. The die is just a conventional cube and should present no difficulties to build.



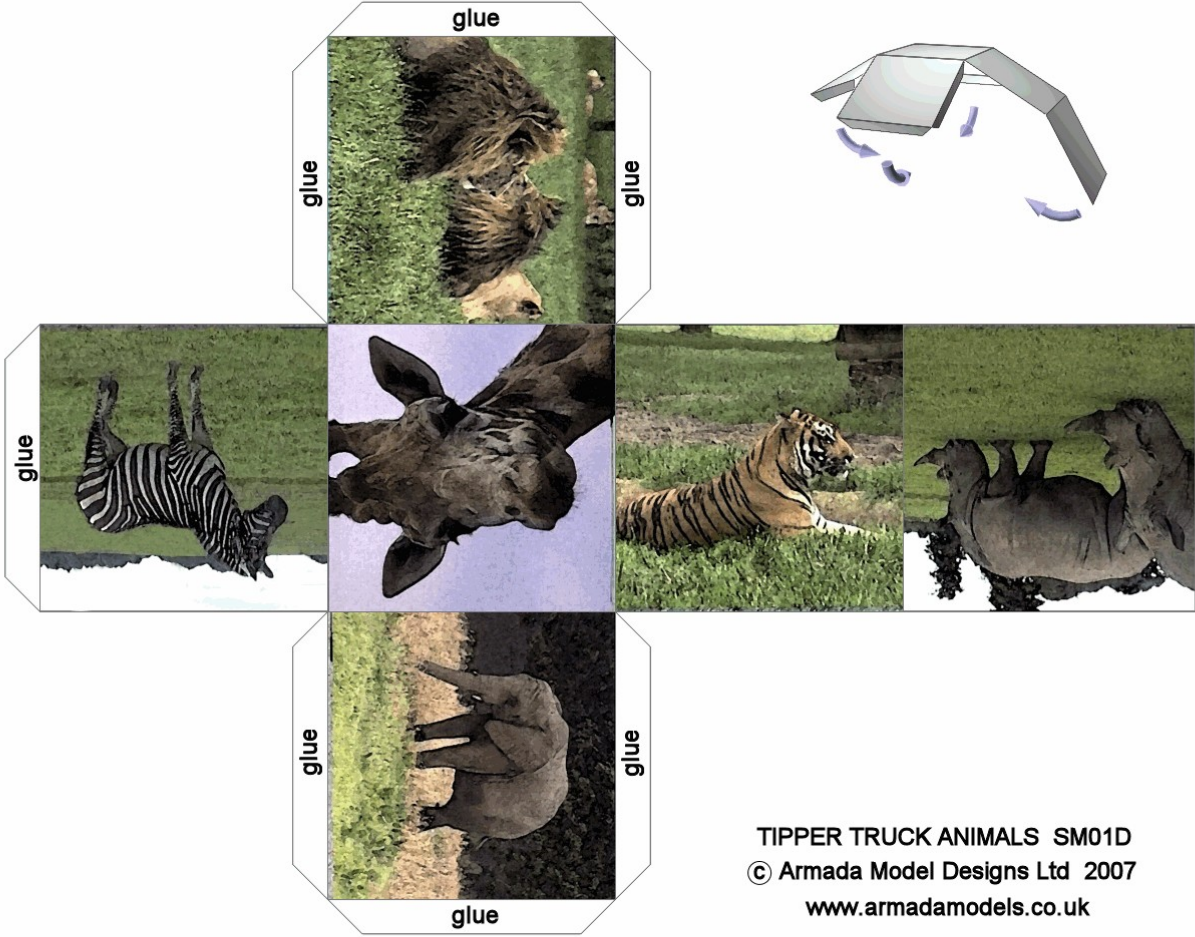
The truck has three main components – one for the main body and two for the rear container. The model can be constructed using just these three components, however, for a more solid appearance additional items (i.e. The outer surfaces of the tyres and the inner wheel parts) can be added. Note that the smaller wheel components form the upper parts of the rear wheels.

As with all card models the finished item can be enhanced by touching up the white edges with water colour paint. Don't forget that there's also a video download of the Little Tipper Truck song available on the 4shared.com website.

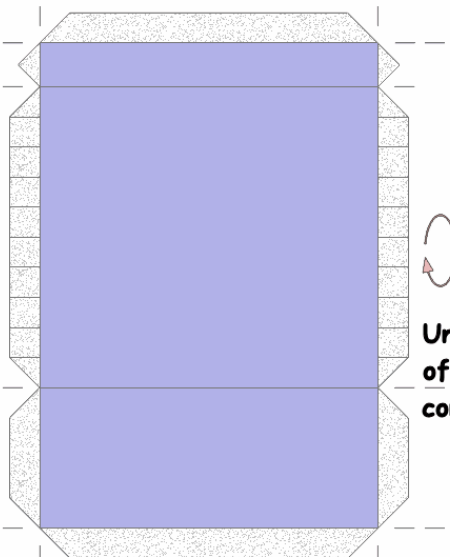
Happy model building!

ANIMAL DIE

(score all fold lines before bending)

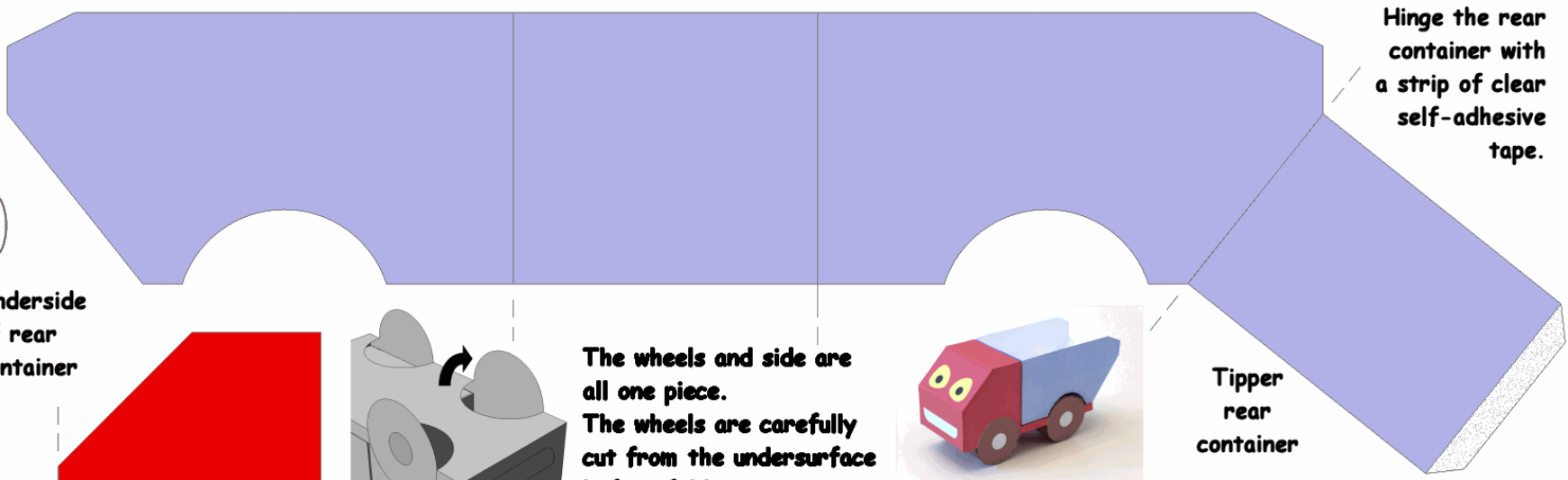


TIPPER TRUCK ANIMALS SM01D
© Armada Model Designs Ltd 2007
www.armadamodels.co.uk



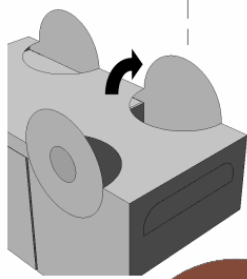
Underside of rear container

Score all fold lines before cutting model from sheet.



Hinge the rear container with a strip of clear self-adhesive tape.

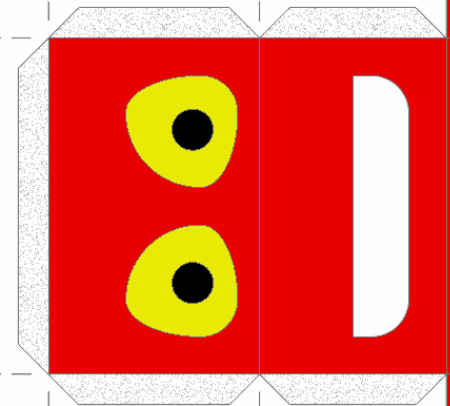
Tipper rear container



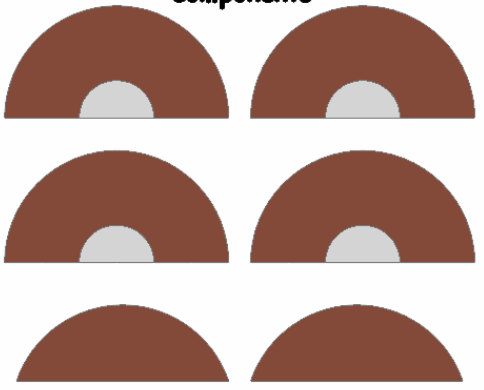
The wheels and side are all one piece. The wheels are carefully cut from the undersurface before folding.



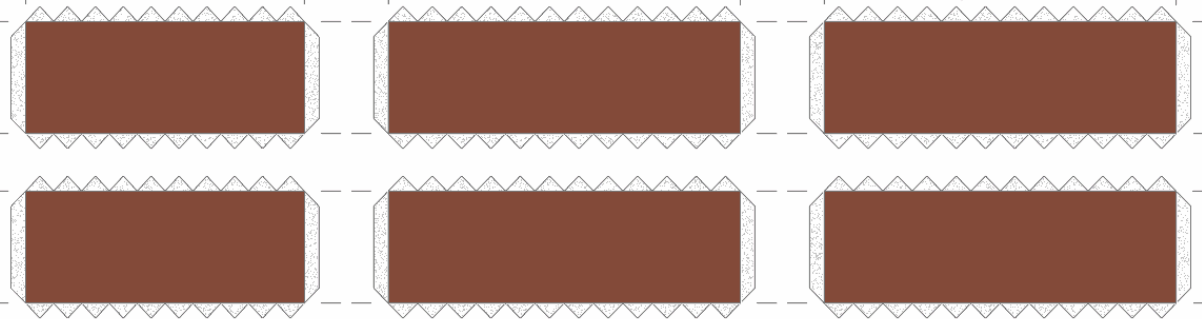
The Little Tipper Truck



Inner wheel components (optional)



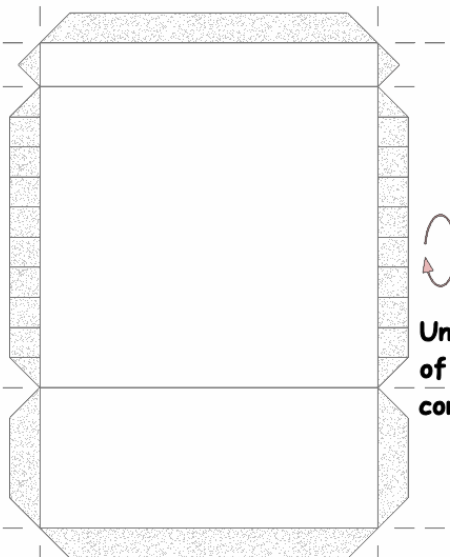
Outer surface of tyres (optional)



gluing tabs

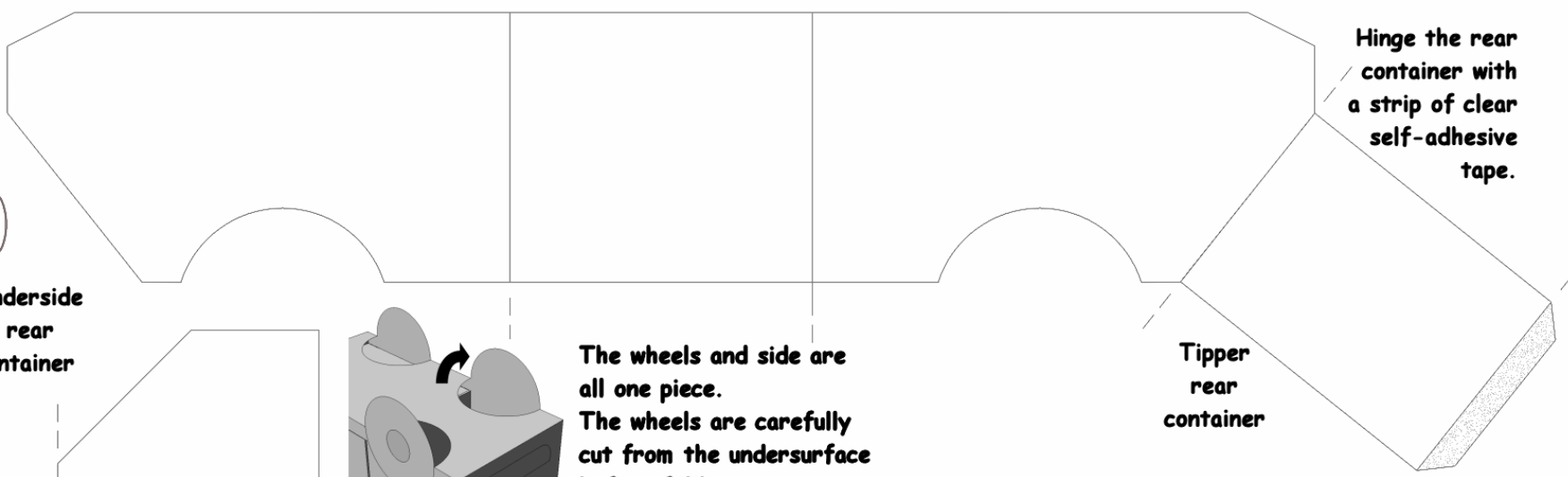
LITTLE TIPPER TRUCK SM01D
© Armada Model Designs 2004

www.armadamodels.co.uk



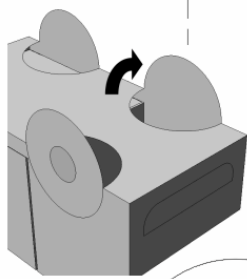
Underside of rear container

Score all fold lines before cutting model from sheet.



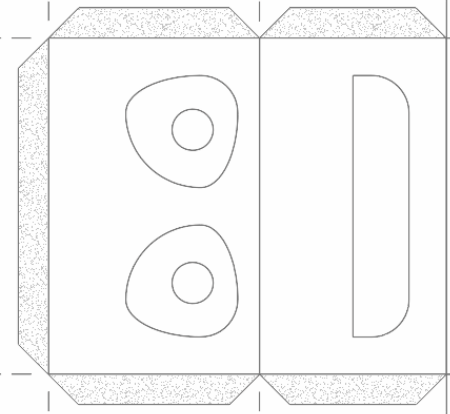
Hinge the rear container with a strip of clear self-adhesive tape.

Tipper rear container

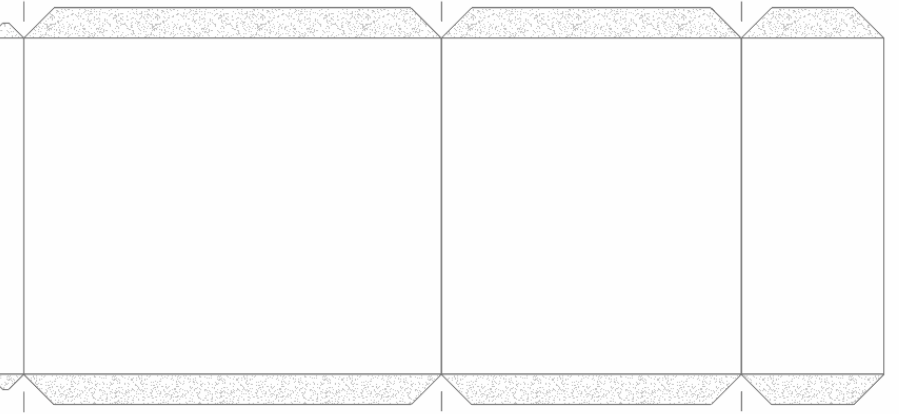
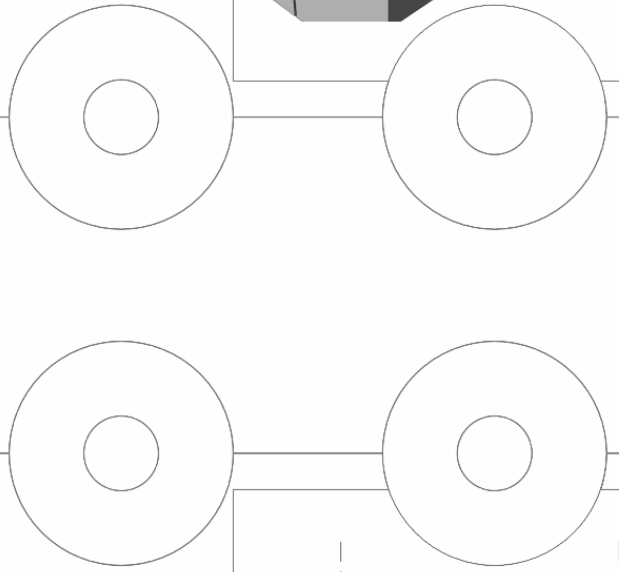
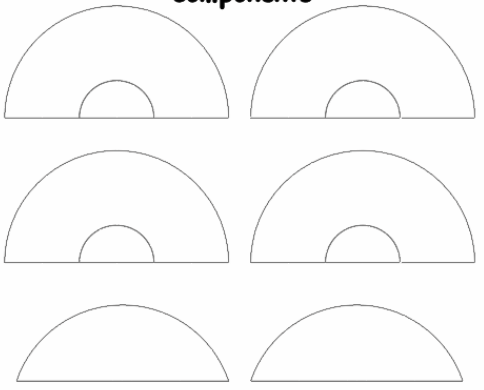


The wheels and side are all one piece. The wheels are carefully cut from the undersurface before folding.

The Little Tipper Truck

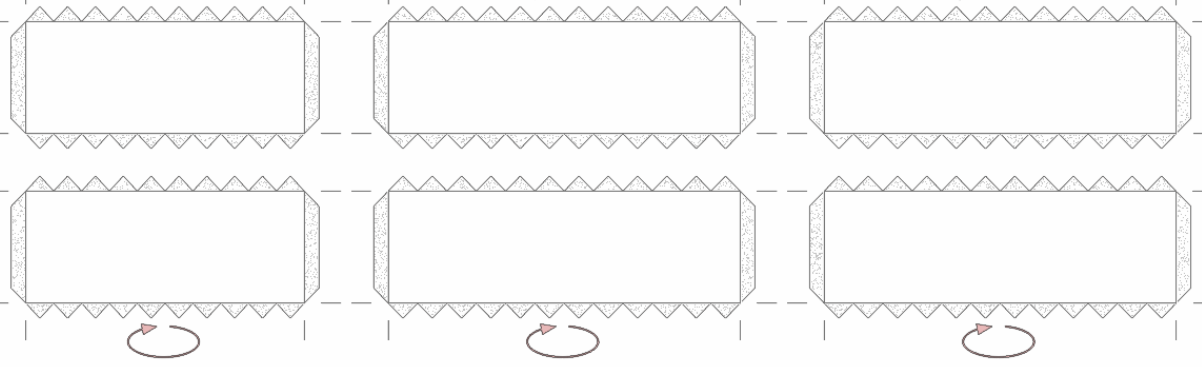


Inner wheel components (optional)



Outer surface of tyres (optional)

gluing tabs



LITTLE TIPPER TRUCK SM001C

© Armada Model Designs 2004

www.armadamodels.co.uk