

# Methodist Church, Newport Pagnell

Armada Model Designs Ltd

MK01C-09

This model is 1/150 scale and is suitable for N-gauge railways or general display.



The Methodist church in Newport Pagnell was built in 1815 - the same year that Napoleon was defeated at Waterloo. The building is described by the Newport Pagnell Historical Society as follows: Set back from the High Street, this church has typical chapel architecture of the period - strong and severe, but with a touch of elegance about the frontage.

[www.armadamodels.co.uk](http://www.armadamodels.co.uk)

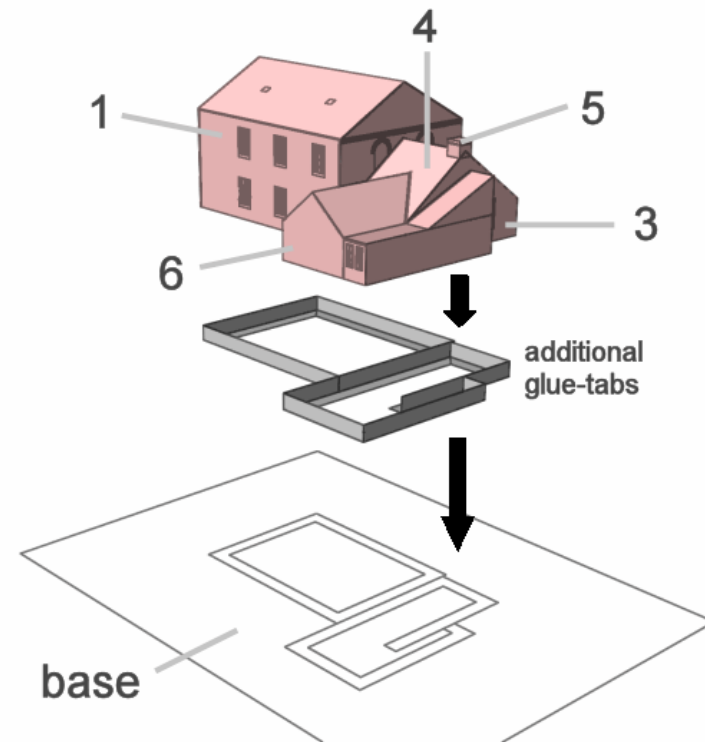
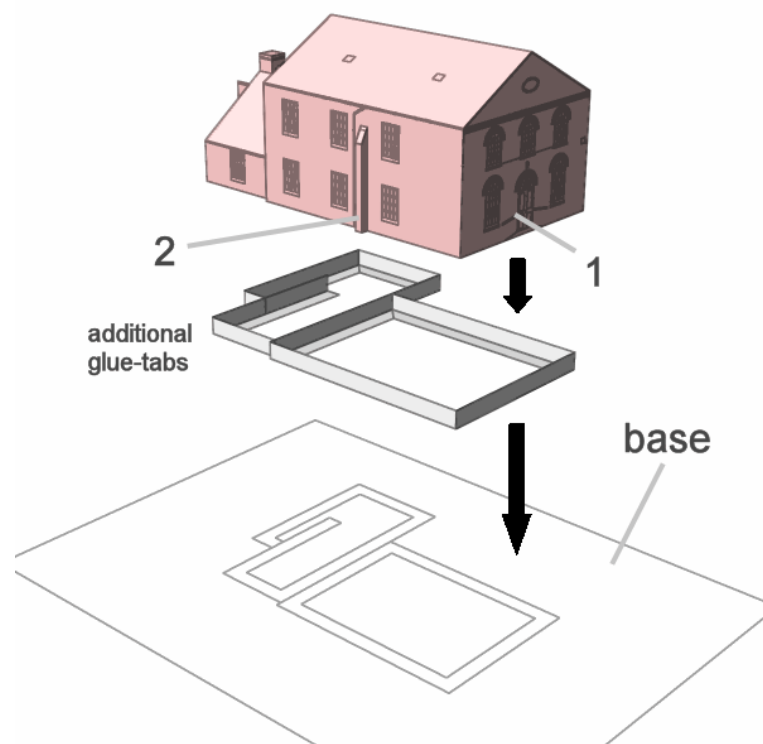
## Instructions

The tools required for card modelling (referred to as paper modeling in the USA) are generally to be found around the home. This model requires 3 sheets of white card (150gsm), scissors or a knife to cut out the components, a ruler for scoring straight lines and some glue (PVA white-glue, used sparingly, is best but Uhu, Bostick or even Pritt Stick will do). Careful scoring of fold-lines is the key to accuracy of shape. Score-lines can be made using a pin or perhaps a blunt craft knife.

The parts are numbered and should be assembled in that sequence. Cut around all solid lines. The dashed lines show where components and gluing tabs are to be scored and folded. Note, some folds will be inwards and others outwards depending on the way in which the components fit together. The small red number on each tab pertains to the component the tab should be glued to.

The simplest way to build the model is to construct the church without its base. For this, only one sheet of card needs to be printed. Alternatively the model can be mounted and to do this additional glue-tabs are cut from the last sheet in this document. These tabs are scored and folded into an L shape, then trimmed as required to fit inside the building. For information, the figures below show the geometry of the glue-tabs that join the church to its base. In reality the tabs are best fitted to the relevant walls one at a time. Where one tab overlaps another the end of each is cut at 45 degrees. Spare tabs can be retained for use on other card models.

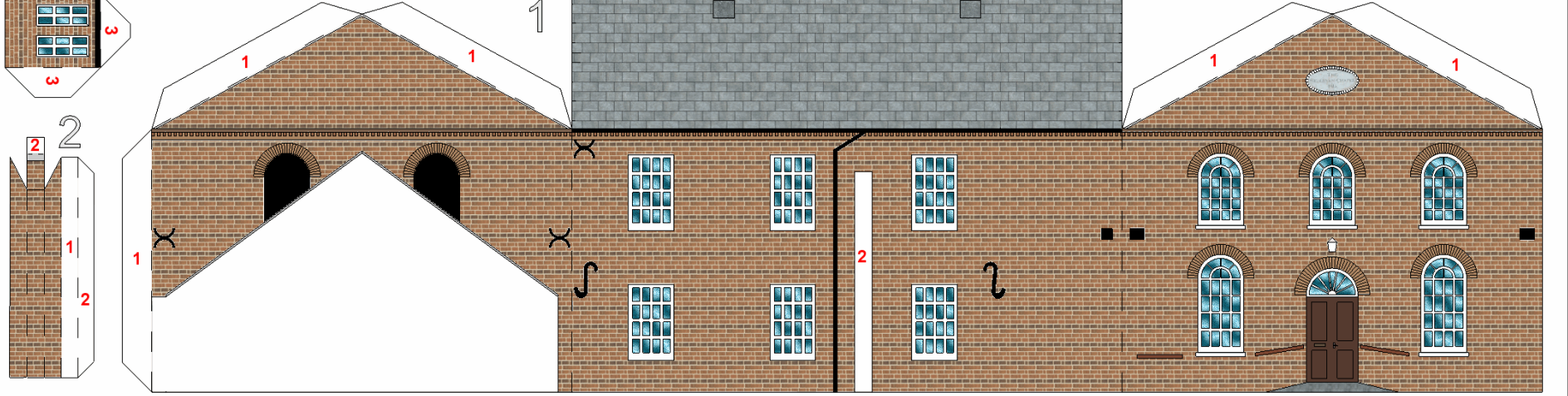
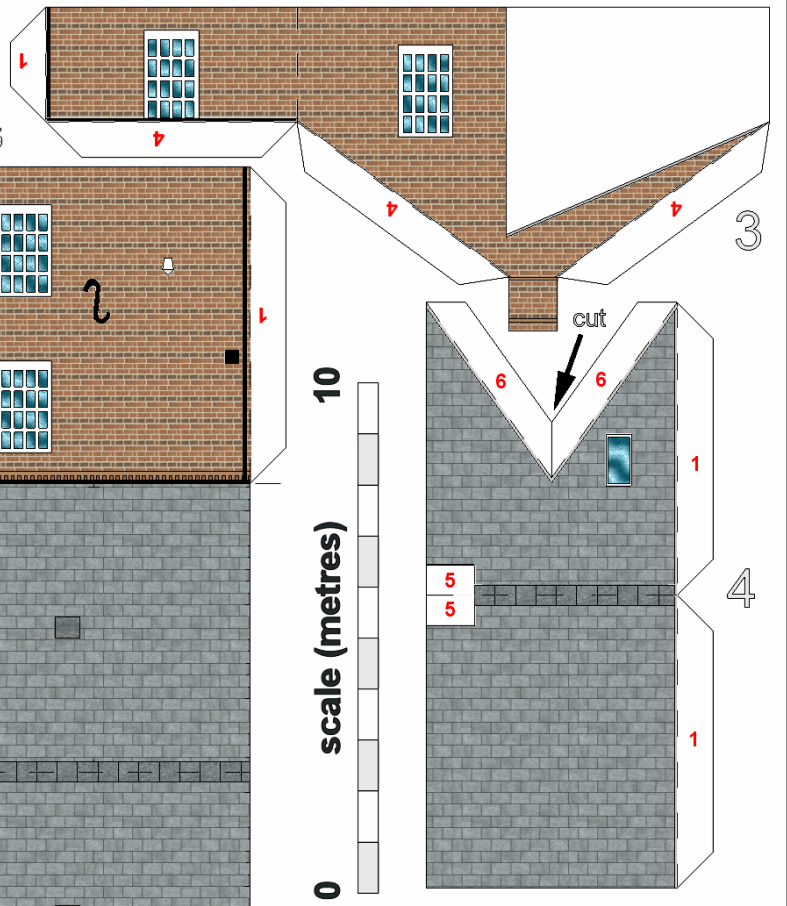
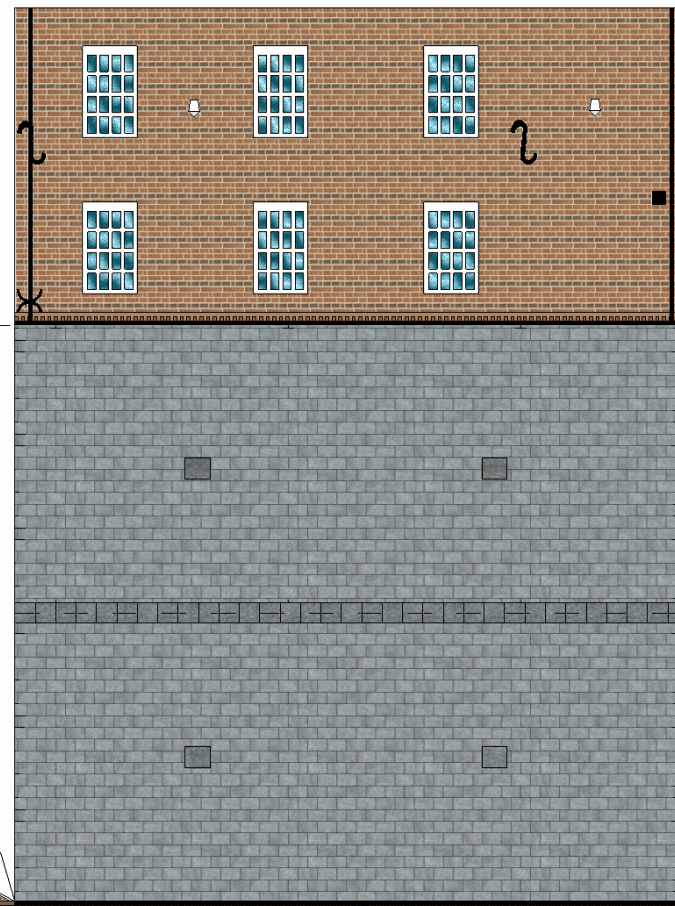
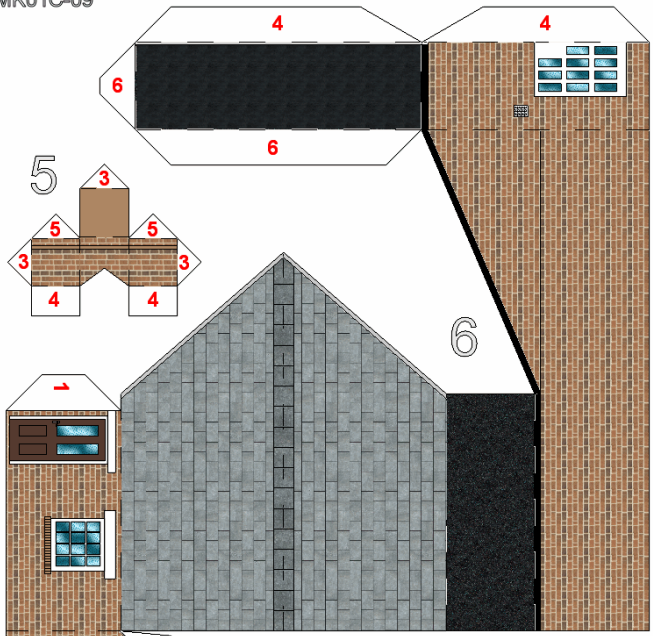
The holes cut in the base act as access panels during construction, allowing the builder to check that the tabs have adhered correctly. Once completed, the model can be given a professional finish by carefully touching up any exposed white edges with the appropriate shade of water-colour paint. If the model is to be used solely for display, the whole assembly can be glued to a sheet of mounting board to give a smart, more robust appearance.

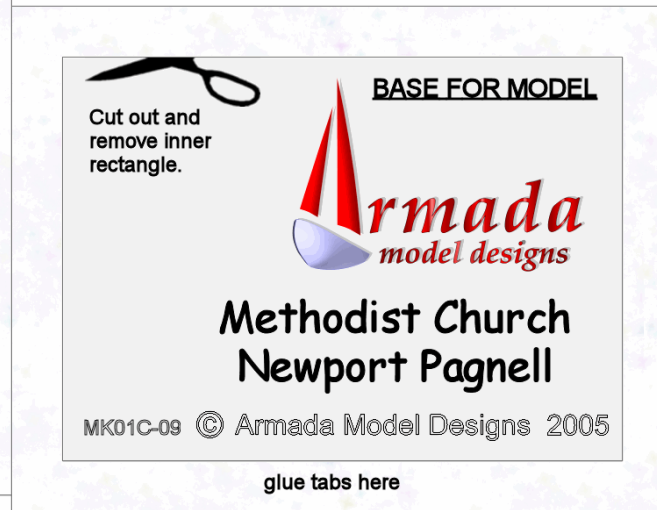
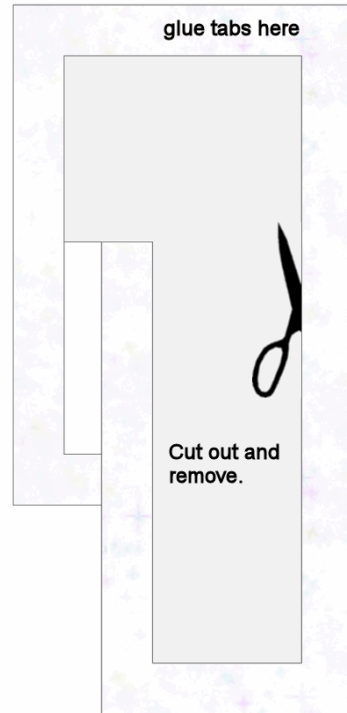


MK01C-09

# Methodist Church Newport Pagnell

© Armada Model Designs 2005





## Additional glue-tab strips.

A large rectangular area containing a grid of horizontal lines. Each row consists of a solid top line, a dashed midline, and a solid bottom line. There are 12 such rows stacked vertically, providing a template for creating glue-tab strips.

